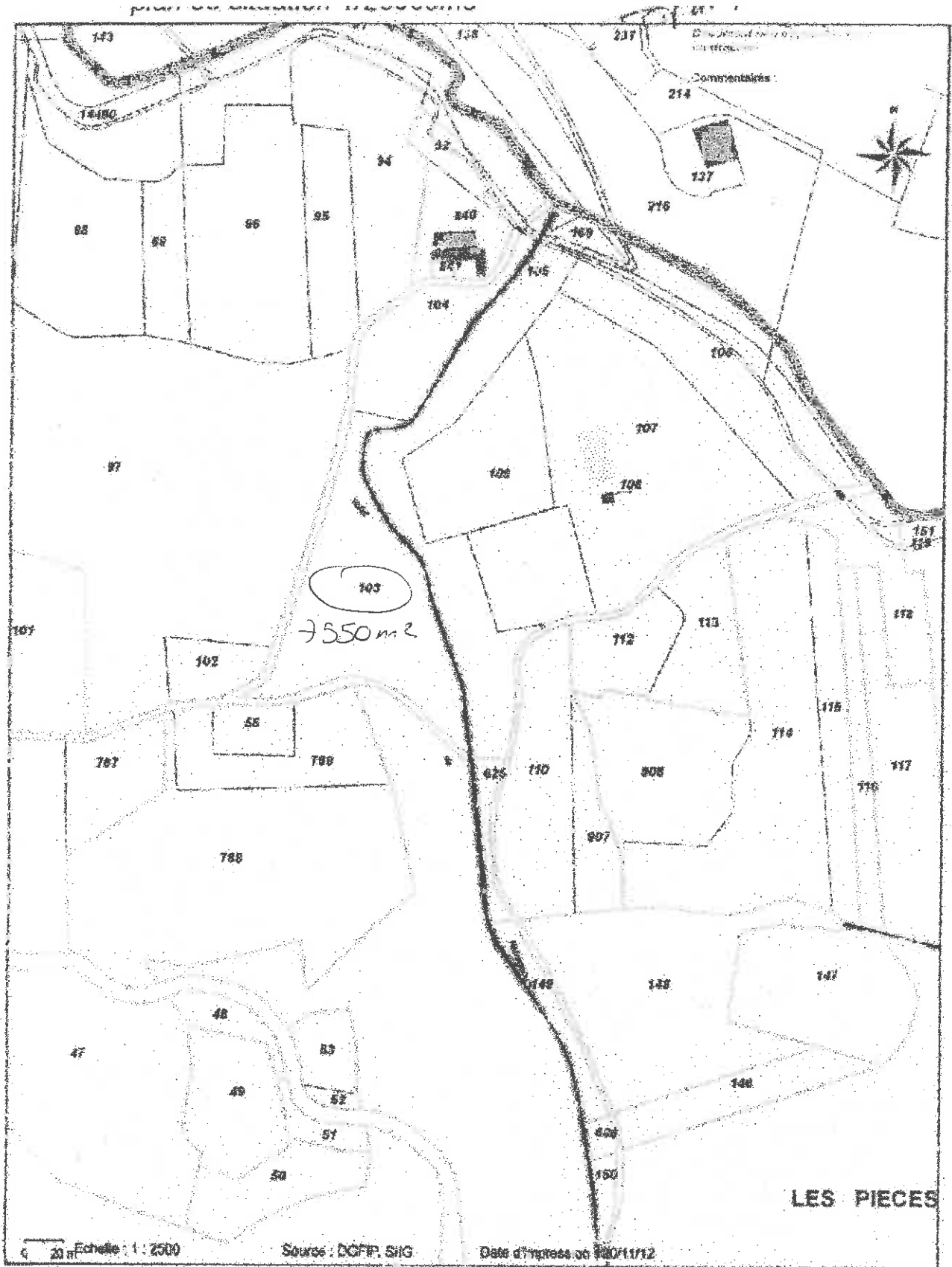


Plan de Situation

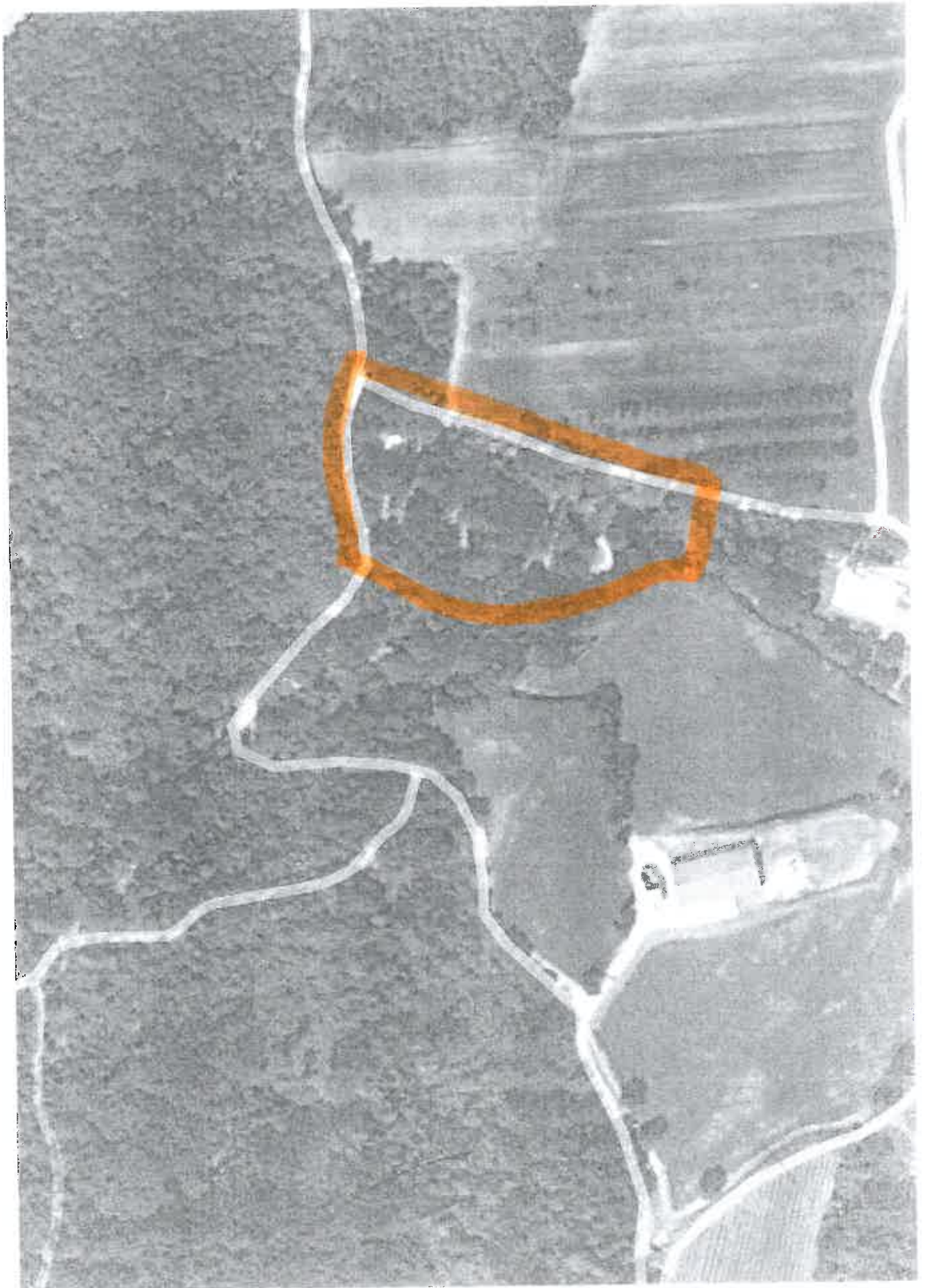
Echelle 1/25 000

25 AVRIL 2013

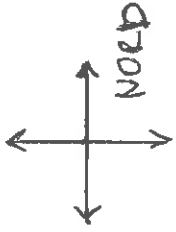


Surface 103 = 7550 m²
 Surface 104 = 3280 m²

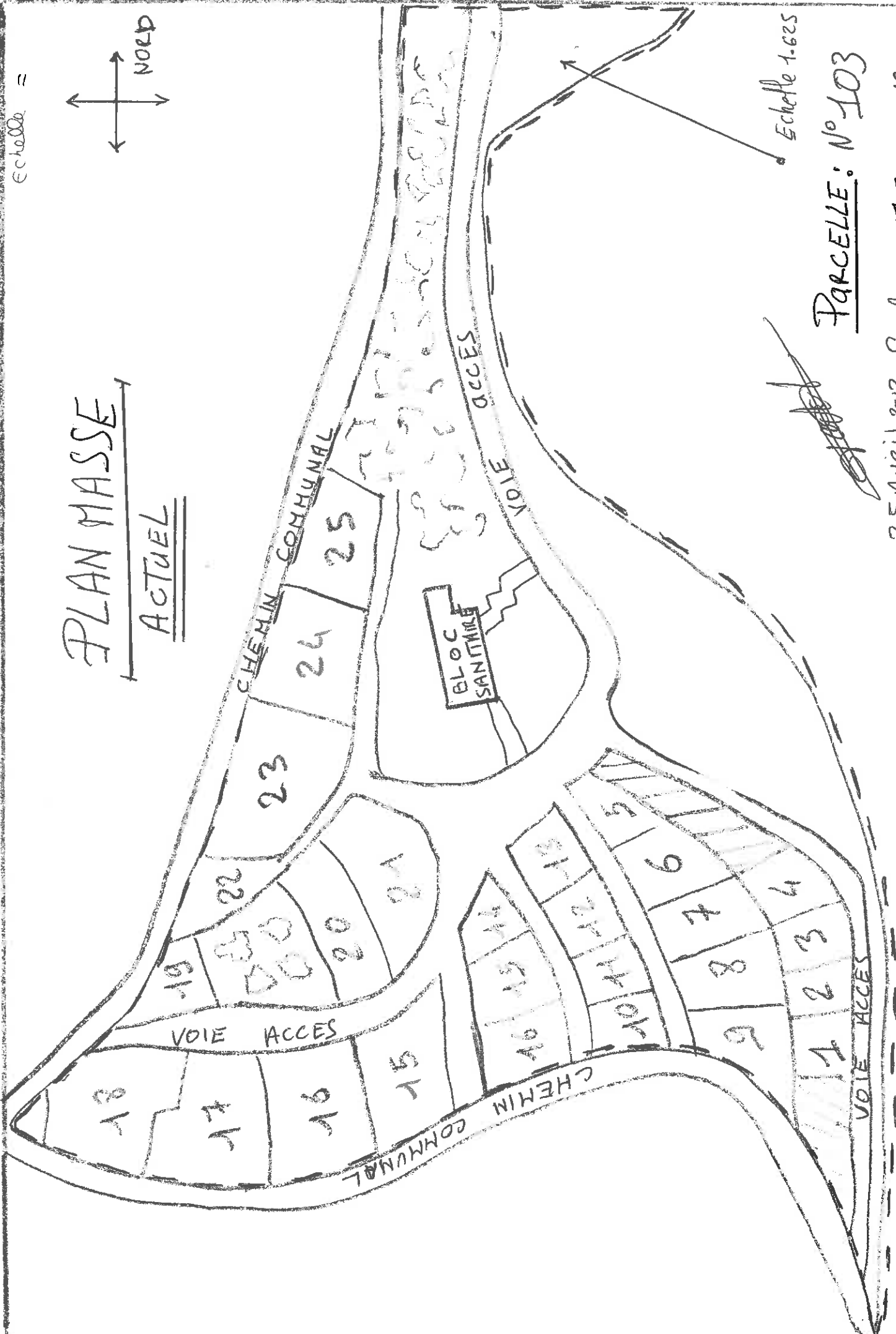
Handwritten signature
 25 Avril 2013



Echelle =



PLAN MASSE ACTUEL



Echelle 1:625

PARCELLE: N° 103

25 AVRIL 2013 Surface: 7550 M²

